

PROGRAM SCHEDULE sakpa (Summer) April 25 to October 31, 2026 Weekdays

* Programs may be changed or canceled without prior notice.
For details, please visit the official Upopoy National Ainu Museum and Park website.



uekari cise Cultural Exchange Hall	yayhanokkar cise Workshop	Archery Space	ikar usi Crafts Studio	teeta kane an kotan Kotan (Traditional Ainu Village)			an=ukokor aynu ikor oma kenru National Ainu Museum
				Outdoor Areas <small>*Held in poro cise in case of inclement weather</small>	sinot cise	poro cise	inoka nukar tumpu Theater

9 am				9:00 am to 5:00 pm Workshop Mukkuri for Beginners (Musical instrument experience) <small>Some charges apply</small>				
10 am	10:00 upopo newa rimse (Performing Arts) <small>No entry or exit during performances</small> <small>Seat tickets required</small>		10:00 am to 12:00 pm Workshop aksinot (Archery Experience) <small>Some charges apply</small>	9:30 Reservation required Workshop ikarkar=an ro (Craft Workshop) <small>Some charges apply</small>	10:30 upaskuma (Life)	10:00 Workshop upopo a=ki ro (Performing Arts Workshop)		9:30 Ainu History and Culture (Short Film)
11 am	11:00 upopo newa rimse (Performing Arts) <small>No entry or exit during performances</small> <small>Seat tickets required</small>			11:00 Reservation required Workshop inuye=an ro (Craft Workshop) <small>Charges apply</small>		11:00 Pon Theater (Life)		10:30 Ainu Crafts Gain Worldwide Attention (Short Film)
12 pm	12:00 kamuy yukar (Short Film) <small>Seat tickets required</small>			12:30 Reservation required Workshop ikarkar=an ro (Craft Workshop) <small>Some charges apply</small>	12:30 upaskuma (Life)	12:00 Workshop upopo a=ki ro (Performing Arts Workshop)		11:30 Everyday Ainu (Short Film)
1 pm	1:00 upopo newa rimse (Performing Arts) <small>No entry or exit during performances</small> <small>Seat tickets required</small>			2:00 Reservation required Workshop inuye=an ro (Craft Workshop) <small>Charges apply</small>	1:30 upaskuma (Life)	1:00 Workshop aynuitak ari a=ye ro (Ainu Language Workshop)		12:30 Ainu History and Culture (Short Film)
2 pm	2:00 kamuy yukar (Short Film) <small>Seat tickets required</small> <small>*May be changed to performing arts or subject to cancellation</small>		2:00 pm to 4:00 pm Workshop aksinot (Archery Experience) <small>Some charges apply</small>			2:00 Pon Theater (Life)		1:30 Ainu Crafts Gain Worldwide Attention (Short Film)
3 pm	3:00 upopo newa rimse (Performing Arts) <small>No entry or exit during performances</small> <small>Seat tickets required</small>	3:00 Reservation required Workshop Ponto Kitchen (Cooking Workshop)		3:30 Reservation required Workshop Tonkori for Beginners (Musical instrument experience)	3:30 upaskuma (Life)		2:30 newsar=an ro (Life) <small>No entry or exit during performances</small>	2:30 Everyday Ainu (Short Film)
4 pm				At the <i>ikar usi</i> workshop, embroidery and woodcarving works are on display. • Hands-on exhibits and touchable materials available. 	4:30 upaskuma (Life)		3:30 Ainu History and Culture (Short Film)	
5 pm	5:00 kamuy yukar (Short Film)						Outside of program hours, each <i>cise</i> (traditional house) is open to visitors. • In the <i>sinot cise</i> , visitors can freely touch kimonos, picture books, and playhouse tools. 	4:30 Ainu Crafts Gain Worldwide Attention (Short Film)
6 pm								

sakpa (Summer)
April 25 to October 31, 2026

PROGRAM SCHEDULE



Weekdays

uaynu kor kotan

National Ainu Museum and Park

ci=numke sirkause nukar usi
(Garden of Native Plants)

This garden boasts more than 100 species of trees and other plants with connections to Ainu culture. Even more examples of such plants can be found elsewhere throughout the park.

sinnurappa usi
(Memorial Site)

Perched on a hill with sweeping views of the Pacific Ocean, this site features facilities where the ancestral remains of the Ainu people are respectfully preserved and honored. A striking monument stands here as a powerful symbol of remembrance and reflection.



teeta kane an kotan kotan (Traditional Ainu Village)
In the Ainu language, a *kotan* is a village or settlement. The *kotan* at Upopoy is home to five thatched *cise* (Ainu houses), including examples made using traditional techniques.

yayhanokkar cise Workshop

- Information
- Shop
- Ticket Desk
- Lockers
- Facilities for Ostomates
- Vending Machine
- Café
- Parking
- Parking Payment Machine
- Bus Stop
- First-Aid Station
- AED
- Restroom
- Nursing Room
- Rest Area
- Food Court and Restaurants
- Prayer Room

Items available for free rental
Wheelchairs, strollers, umbrellas. Ask to a member of staff if you wish to rent these items.
Free Wi-Fi is available inside Upopoy. Password: upopoy01

yayhanokkar cise Workshop

Ponto Kitchen (Cooking Workshop) Workshop **Reservations required**

Get an introduction to Ainu dishes in a cooking and tasting workshop suitable for beginners. *Dishes may vary depending on the season.

- Reservation required (at least 30 mins. before start time)
- Elementary school students and above (ages 6 and over) (Elementary school students (ages 6 to 12) must be accompanied by a guardian.)
- 2 groups (2 to 5 people per group)



Archery Space

aksinot (Archery Experience) Workshop

An archery experience with a simplified bow and arrow.

- Elementary school students and above (ages 6 and over) (Elementary school students (ages 6 to 12) must be accompanied by a guardian.)
- 3 arrows per person
- You may be asked to wait during busy times

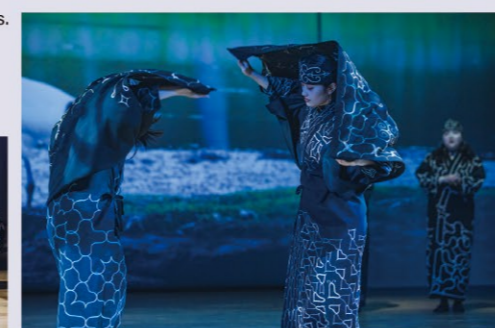


uekari cise Cultural Exchange Hall

upopo newa rimse (Performing Arts)

Performances of songs and dances passed down in various regions. * Program content varies by time of day.

- Seat ticket required (available in front of Cultural Exchange Hall)
- Designated seating only
- No entry or exit during performances. Eating, drinking, photography, filming and audio recording are not permitted during performances.



kamuy yukar (Short Film)

Two animated short films based on Ainu legends: The Boy Who Brought Down a Kamuy and The Solar Deity Caught by Evil Fox.

- Seat ticket required (available in front of Cultural Exchange Hall)
- Designated seating only



Park wide 60 to 90 min.

An Ainu Toolbox for Life (Puzzle Game)(In Japanese only)

- Purchase kits at the Entrance Center
- On sale from 9:00 am to 3:30 pm
- Fee: 500 yen
- Mobile device required
- For ages 10 and over



an=ukokor aynu ikor oma kenru National Ainu Museum

ikor tumpu Permanent Exhibition and Special Exhibitions (Exhibits)

The permanent exhibition introduces the Ainu language, history and culture from the perspectives of the Ainu. In addition, special and thematic exhibitions are organized several times throughout the year.

- No eating, drinking, filming, or long umbrellas. Only pencils are allowed for notes.



inoka nukar tumpu Theater Screening (Short Film)

A clear, easy-to-follow introduction to Ainu history and culture through large-screen films. In addition to Ainu History and Culture and Ainu Crafts Gain Worldwide Attention, the production Everyday Ainu has also been screened since 2025.

- No eating, drinking, filming. Only pencils are allowed for notes.



teeta kane an kotan Kotan (Traditional Ainu Village)

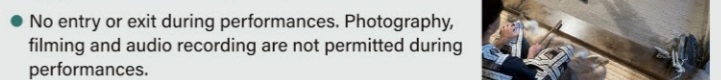
Outdoor Areas **upaskuma** (Life) **sinot cise** **pon theater** (Life)

Learn about life in a *kotan* and experience traditional songs and dances. Each session features a different theme, including houses, boats, hunting equipment, and place names. * Held in *poro cise* in case of inclement weather



poro cise **newsar=an ro** (Life)

Experience Ainu oral literature through tales and lyrical songs passed down through the generations. * No entry or exit during performances. Photography, filming and audio recording are not permitted during performances.



ikar usi Crafts Studio

ikarkar=an ro (Craft Workshop) **inuye=an ro** (Craft Workshop)

Try embroidering an Ainu pattern. Try carving an Ainu pattern.

- Choose from three types of items
- Reservation required (at least 5 mins. before start time)
- Ages 9 and over (Elementary school students (ages 6 to 12) must be accompanied by a guardian.)
- Fee: 1,000 yen (bag or wooden frame), free (coaster)



sinot cise **upopo a=ki ro** (Performing Arts Workshop)

Try singing *upopo*, traditional Ainu songs unique to each region.

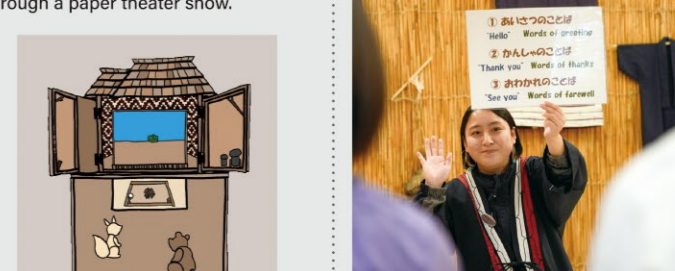


sinot cise **Pon Theater** (Life)

Discover the relationship between the Ainu and the *kamuy* (spirit-deities) and learn about Ainu lives past and present through a paper theater show.

sinot cise **aynu itak ari a=ye ro** (Ainu Language Workshop)

Learn everyday words in Ainu.



ikar usi Crafts Studio

Tonkori for Beginners (Musical instrument experience) **Mukkuri for Beginners** (Musical instrument experience)

Tonkori (stringed instrument) experience, where participants learn how to hold the instrument and produce sound. *Mukkuri* (mouth harp) experience, practicing everything from holding the instrument to changing the sound.

- Reservation required (at least 10 mins. before start time)
- Elementary school students and above (ages 6 and over) (Elementary school students (ages 6 to 12) must be accompanied by a guardian.)
- Fee: 1,000 yen (free for people who bring their own *mukkuri*)

